



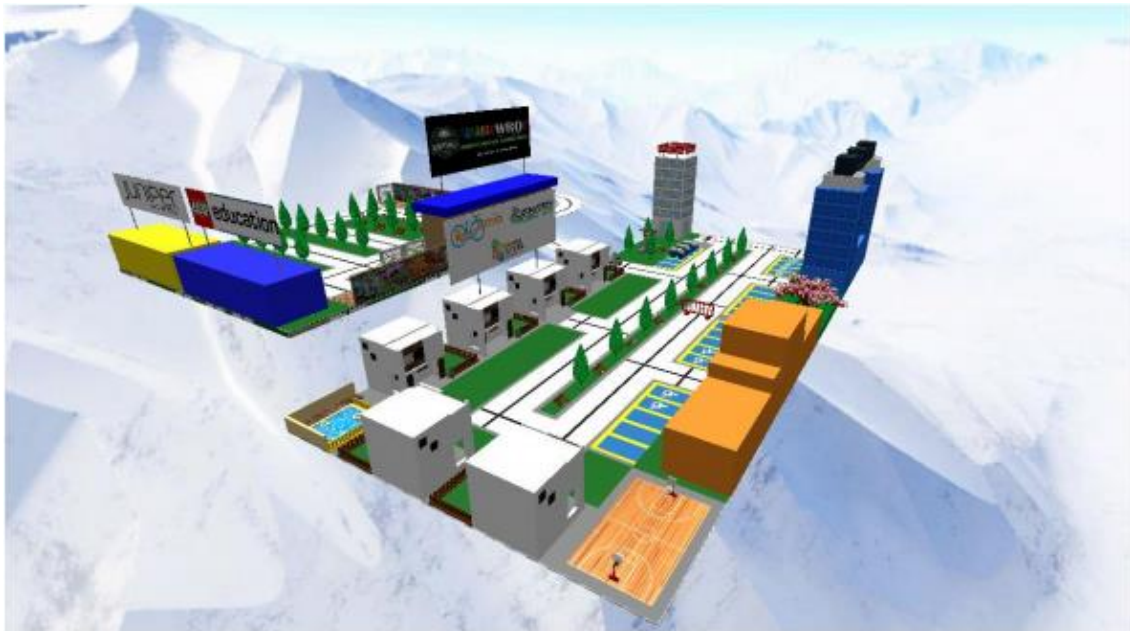
WORLD ROBOT OLYMPIAD

FLASHBACK CHALLENGES

Elementary

Beginner Level

## WINDSTORM VIRTUAL CITY



# Table of Contents

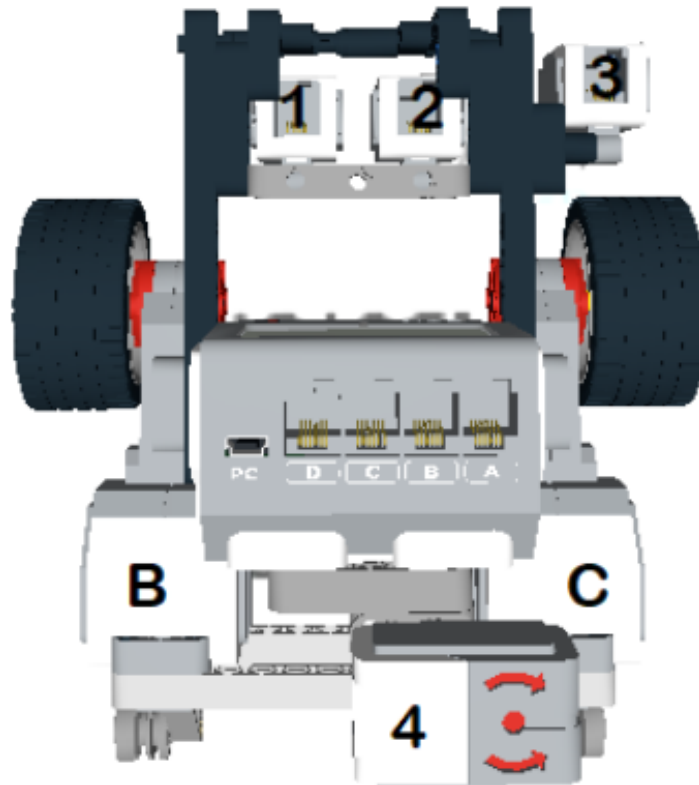
General Rules .....	2
Robot Ports.....	3
Robot Missions.....	3
Score.....	4
Scoring Interpretation .....	4

## General Rules

1. All teams must consist of just one competitor.
- 2. It is not allowed to make changes in the environment before, after and during the simulation.**
- 3. Is not allowed import your own robot.**
4. When the simulation starts, the competitor can only use the camera's tools and the scoreboard button.
5. All the tasks need to be solved only by using the code created by the participant for the robot.

## Robot Ports

\*Remember, is not allowed import a new robot.



## Robot Missions

The robot must move the medical kit to the target area in front of the hospital.

The robot must move the electrical power cable to the target area in front of the power plant.

The mission is complete when the robot parks into the final area and the chassis of the robot is entirely (top-view) within the area.

For more understanding you can see the next sample video:

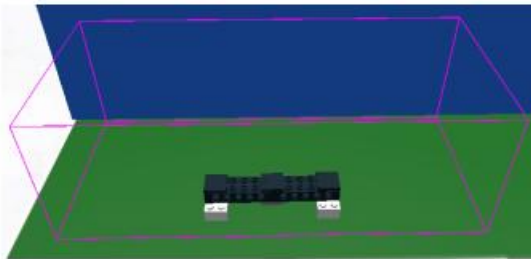
<https://youtu.be/7Twa1HJeKs0>

# Score

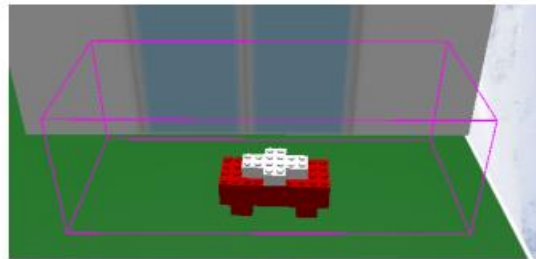
Elementary Beginner Category Windstorm- Virtual Village	Each	Total
<b>Bring the emergency supplies to the target areas</b>		
Supply delivered completely in a correct target area	40	40
<b>Restore electrical power</b>		
The white end of the electric cable is delivered completely in the correct target area	40	40
<b>Park the robot</b>		
Robot stops on Finish Area and simulation stops. (only if other points are assigned)	20	20
<b>Maximum Score</b>		<b>100</b>

# Scoring Interpretation

## Scoring Interpretation



Power cable delivered completely in the **correct** target area. It is not important if the object is standing or lying but it is important the object to stay completely inside the area.



Medical kit delivered completely in the **correct** target area. It is not important if the object is standing or lying but it is important the object to stay completely inside the area.